

# Designers

Zaha Hadid

Sarah Pook  
19<sup>th</sup> October 2020  
Final version

© Hampshire County Council

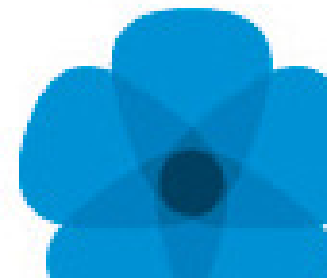
# Overview

## **This document contains...**

Information about the life and work of Zaha Hadid

## **Points to consider when using this resource**

Please add and amend as necessary



# Designers

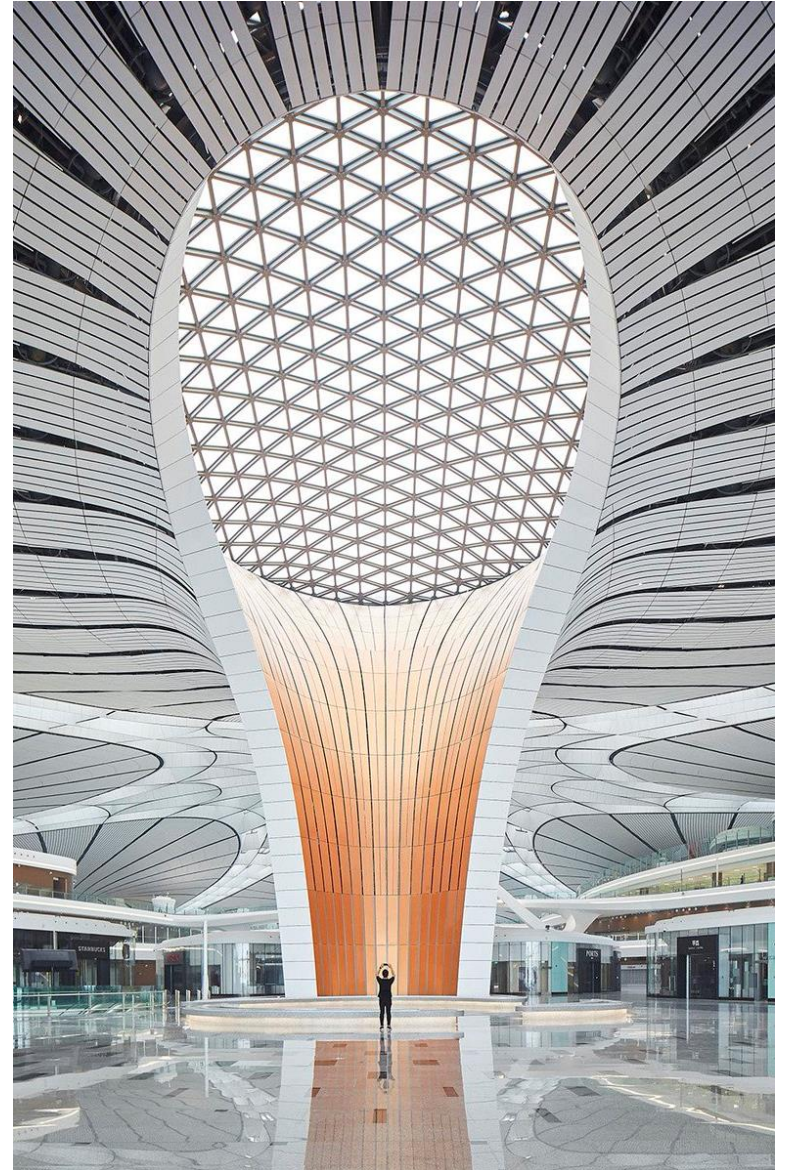
Zaha Hadid

ZAHA  
HADID(1950-2016)





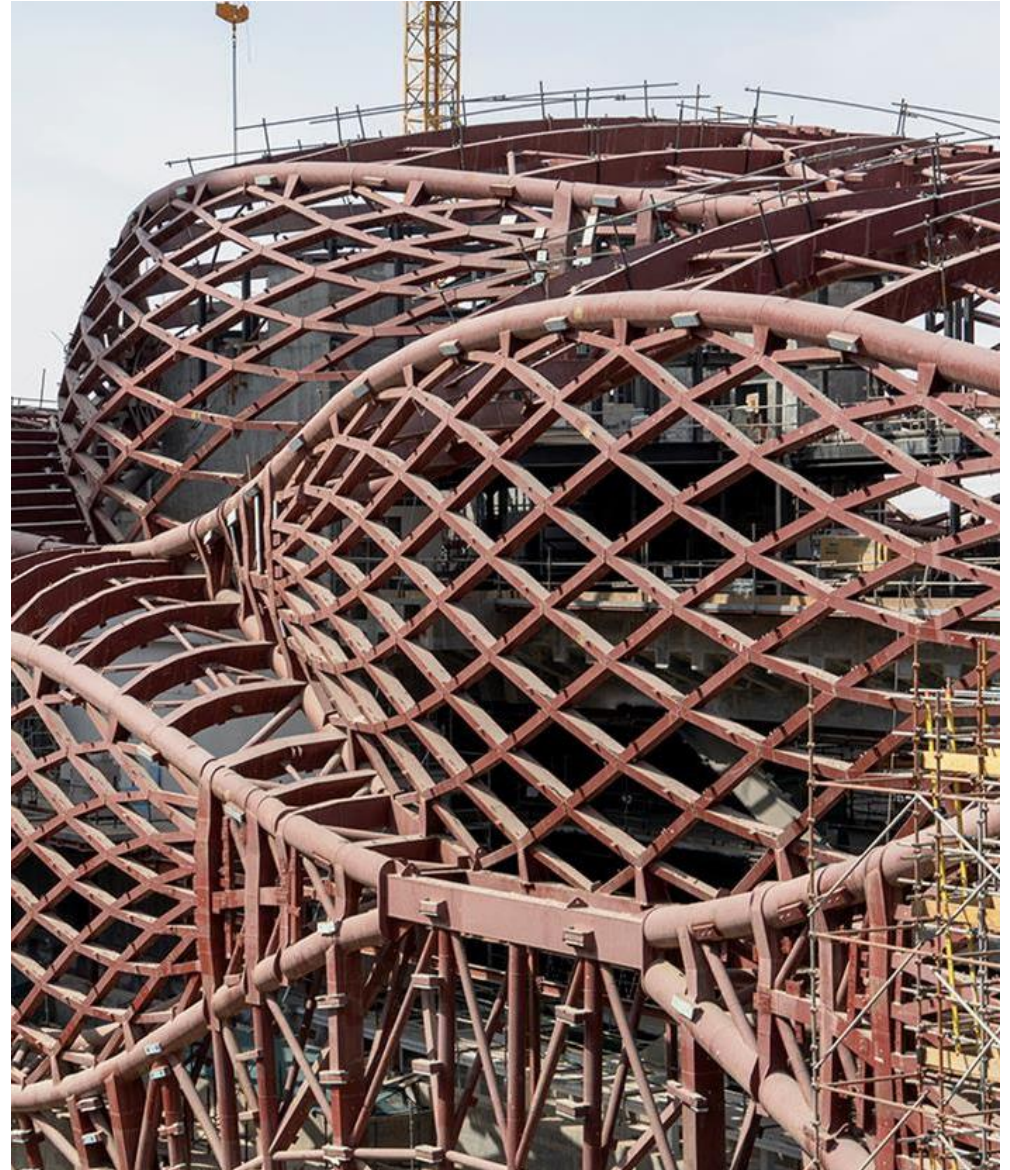
Zaha Hadid was an internationally recognised Iraqi-British Architect, responsible for a variety of outstanding buildings and other structures, often based on unusual geometrical shapes. She received a number of prestigious awards for her innovative architectural designs, including on two occasions, the Stirling Prize. She was the first female architect to receive the Royal Gold Medal (awarded by the Royal Institute of British Architects).





Her father was a successful industrialist and her mother was an artist, which probably influenced her future career. Although initially studying Mathematics in Beirut, she came to London to study architecture in 1972, at the highly respected Architectural Association School of Architecture. After graduating, she worked in the Netherlands, although she started to build her reputation teaching Architecture in England, the USA and Germany, promoting an innovative and imaginative approach to the design of buildings. Many of her early designs were not built, undoubtedly due to the lack of foresight and ambition of potential clients, who selected more conservative and less imaginative architects.

She established her own company - Zaha Hadid Architects, in 1979.







Hadid's break through came in 1993 with the design of a Fire Station for the Vitra Factory in Weil-am-Rhei, Germany. This imposing building is based on a number of intersecting geometrical shapes, with the main road running through its centre.

The polished concrete building is now a display area for the factories extensive collection of designer chairs.



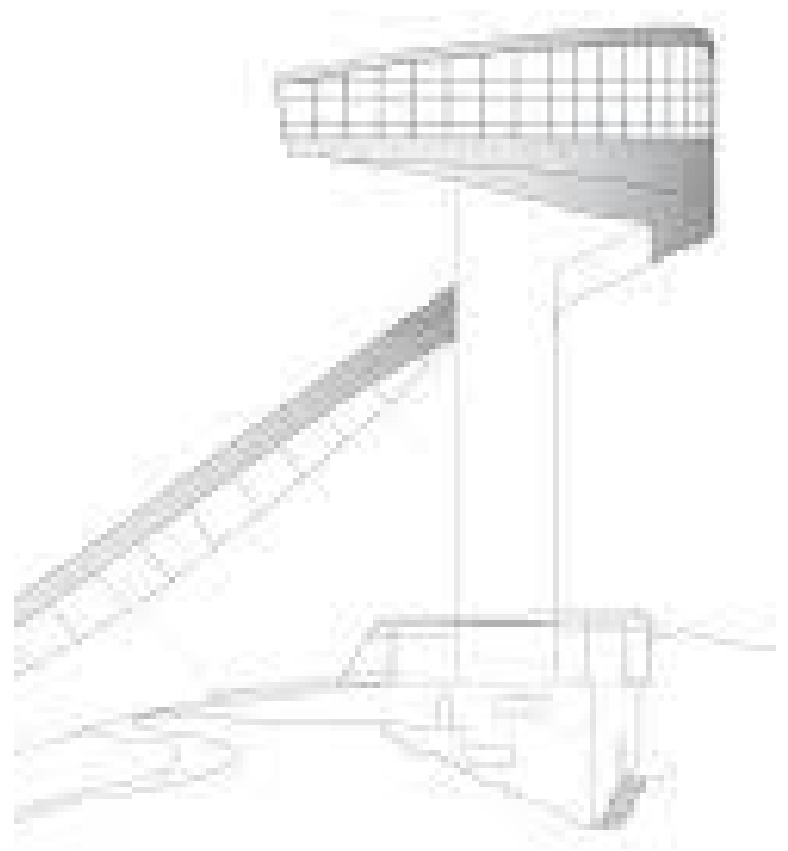


ZAHA HADID  
AN ARCHITECT  
A MASTERPIECE



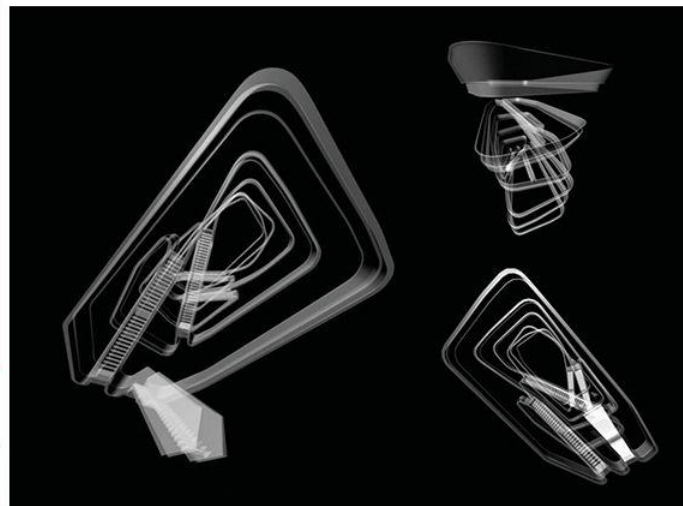
# BERGISEL SKI JUMP 2002

Hadid was awarded the commission to redesign the Bergisel Ski Jump in Innsbruck, Austria, after winning an international competition. The outcome was a typical Hadid design, blending the ski jump with the natural surroundings, and composed of curves and straight lines. It is both aesthetically pleasing and functional and challenges the appearance of existing ski jumps. It is a reinforced concrete and steel structure, with the ski jump integrated with a 360-degree viewing platform, allowing dramatic alpine views. The ski jump is probably the main visitor attraction in Innsbruck, being regarded as an outstanding, eye-catching, architectural masterpiece.





BY



# SHEIKH ZAYED BRIDGE, ABU-DHABI, UNITED EMIRATES- 2010



Although on first sight a very different type of bridge, it is in reality a cleverly disguised arch bridge. It is regarded as a landmark, in the capital city of the United Arab Emirates. It is a striking design, with its smooth curves that represent the desert sand dunes. It was completed in November 2010 and is composed of a decking of prestressed concrete and steel arches. It is a beautiful example of aesthetic design, in daylight, when all its features can be viewed. Also, at night, when the dynamic lighting system takes full effect.

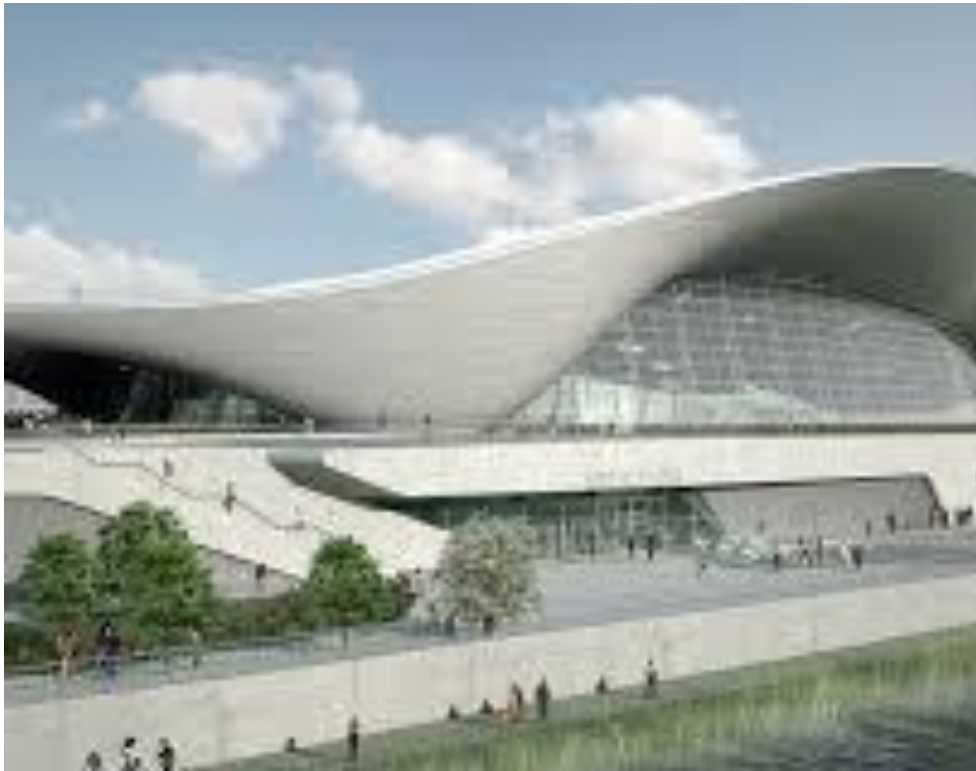


**ZAHA HADID**

Rétrospective

Du 13 Août au 19 Janvier 2014 au Centre Georges Pompidou

# LONDON AQUATICS CENTRE - 2012



Designed in 2004 and built for the London Olympics and Paralympics of 2012. Largely constructed of precast concrete with a structured steel roof. When first built, 'wings' on either side provided the necessary extra seating for the swimming events and after the Paralympics, these were removed and recycled (as always intended). Notice the shape of the roof, which is designed to look like a wave. Another eye-catching Hadid design.



# Exam style questions

1. Write a paragraph outlining the background of Zaha Hadid, before she became a 'famous' architect.
2. Hadid's break through came in 1993. What is the name of the building she designed?
3. Study a selection of Zaha Hadid's buildings / structures. List the features / characteristics of her work. As you list each feature / characteristic, name the structure(s) / building(s) that display the feature / characteristic.

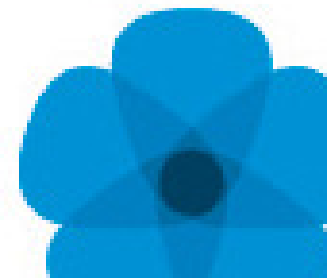


# Design and Technology

sarah.pook2@hants.gov.uk

For further details on the full range of services available please contact us using the following details:

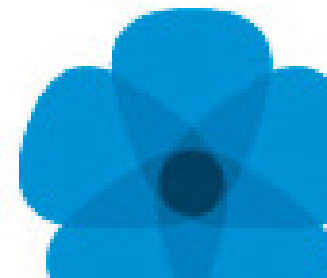
Tel: 01962 874820 or email: [hias.enquiries@hants.gov.uk](mailto:hias.enquiries@hants.gov.uk)



# Upcoming Courses

Keep up-to-date with our learning opportunities for each subject through our Upcoming Course pages linked below. To browse the full catalogue of learning offers, visit our new Learning Zone. Full details of how to access the site to make a booking are provided [here](#).

- [English](#)
- [Maths](#)
- [Science](#)
- [Geography](#)
- [RE](#)
- [History](#)
- [Leadership](#)
- [Computing](#)
- [Art](#)
- [D&T](#)
- [Assessment](#)
- [Support Staff](#)
- [SEN](#)



# Terms and Conditions

## Terms of licence

Moodle+ subscribers are licenced to access and use this resource and have agreed to pay the annual subscription fee. This authority starts when the fee is paid and ends when the subscription period expired unless it is renewed. This file is for personal or classroom use only. By using it, you agree that you will not copy or reproduce this file except for your own personal, non-commercial use. HIAS have the right to modify the terms of this agreement at any time; the modification will be effective immediately and shall replace all prior agreements.

## You are welcome to:

- download this resource
- save this resource on your computer
- print as many copies as you would like to use in your school
- amend this electronic resource so long as you acknowledge its source and do not share as your own work.

## You may not:

- claim this resource as your own
- sell or in any way profit from this resource
- store or distribute this resource on any other website or another location where others are able to electronically retrieve it
- email this resource to anyone outside your school or transmit it in any other fashion.

